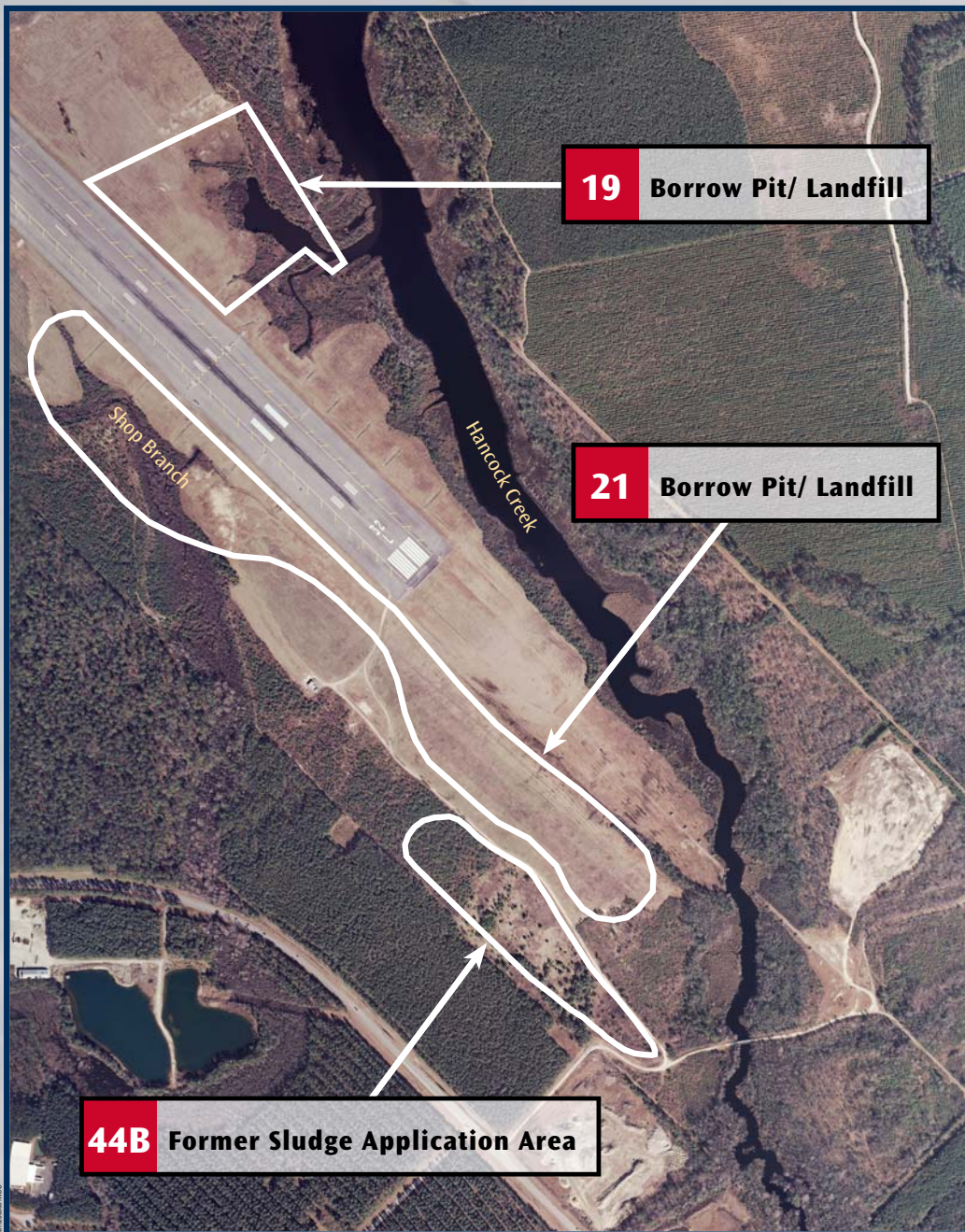


Operable Unit 13

MCAS



Cherry Point



- OU13 is approximately 61 acres and consists of 3 sites (Sites 19, 21, and 44B).
- The primary contaminants include several chemicals found infrequently above State groundwater standards (1,1-dichloroethene, methylene chloride, vinyl chloride, and bis (2-ethylhexyl) phthalate).
- The Record of Decision (ROD), signed in September 2005, includes the following remedy:
 - Natural attenuation (i.e. natural reduction over time) and long-term monitoring of shallow groundwater.
 - Land use controls include restricted shallow groundwater use and constraints on excavations that encounter groundwater.

Site 19 and 21 Borrow Pits/Landfills

- Consists of areas north and south of Runway 32L that include several former borrow pits that were later used for waste disposal.
- The first borrow pits were excavated in 1949 and the sites continued to be used until the early 1960s.
- No disposal records exist that list the quantities or types of wastes, but it is believed to include fly ash from the power plant and possibly industrial waste and asbestos-lined piping.



Borrow pit/landfill area facing Runway 32L



Site 19 adjacent to Hancock Creek

Site 44B Former Sludge Application Area

- An area adjacent to Site 21 where liquefied sludge from the Air Station sewage treatment plant was land applied in 1987.
- In the 1950s and 1960s, the area was reportedly a disposal site for wastes that may have included asbestos piping.



Former sludge application area



Hancock Creek next to Runway 32L approach lights