

SYMBOL	DESCRIPTION	DATE	APP'D

REVISIONS

A.P.W.O. DWG. NO.
14398

DEPARTMENT OF THE NAVY BUREAU OF YARDS & DOCKS
U.S. NAVAL BASE, MARIANAS
NAVAL SUPPLY DEPOT GUAM

A.P.W.O. GUAM, M.I.
DRWN. JESUITAS SIOPONGCO
CHK. HERMS
BR. MGR. *Gilchrist*
DES DIR. ACKERMAN
PLAN. DIR. S.A. MURRAY
PLAN. & DES OFFICER *[Signature]*
AREA P.W.O. *[Signature]*

MASTER SHORE STATION DEVELOPMENT PLAN

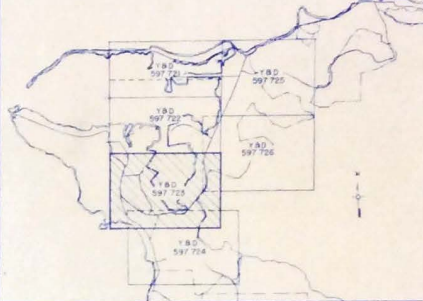
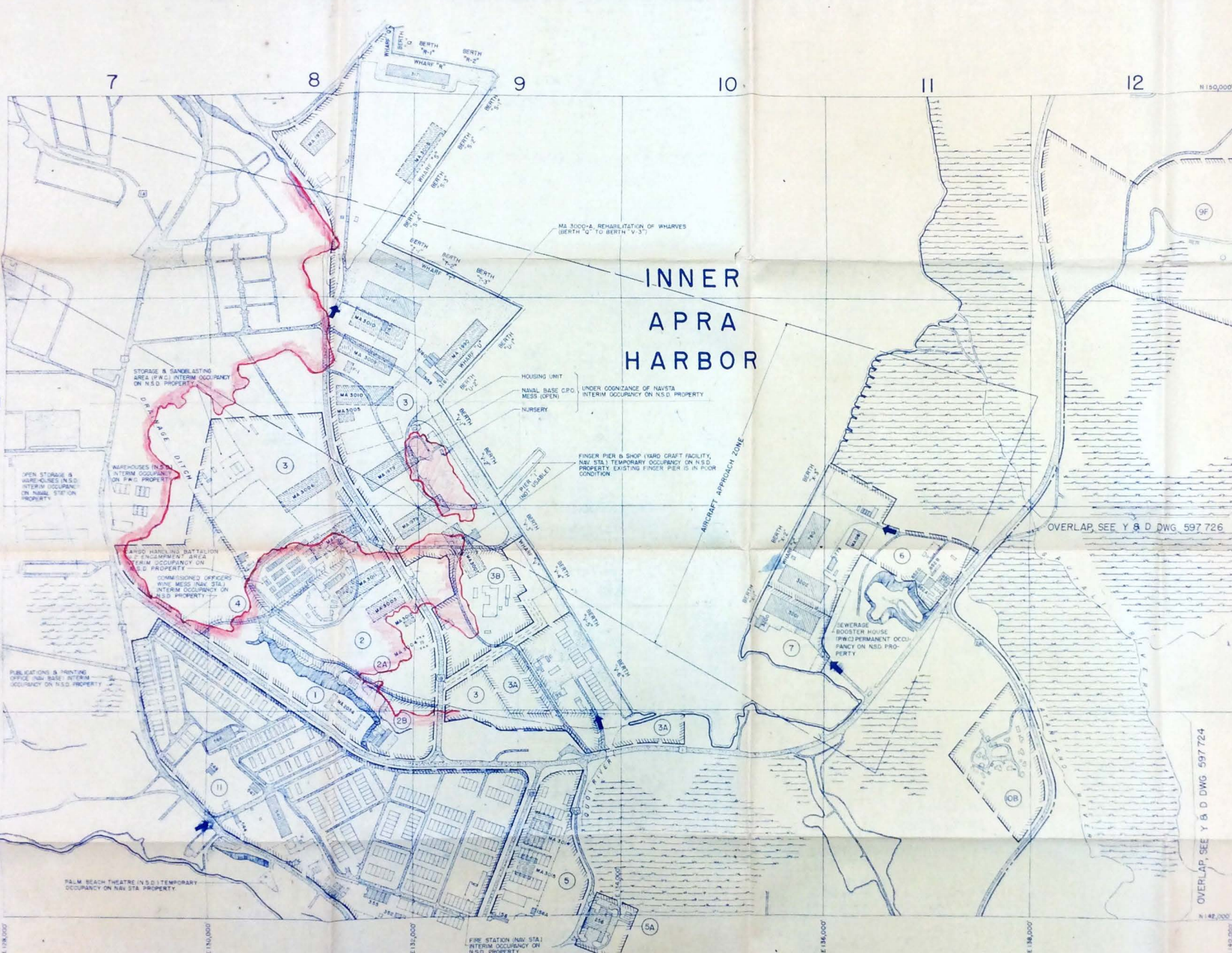
PART III - SECTION 2

GENERAL DEVELOPMENT PLAN

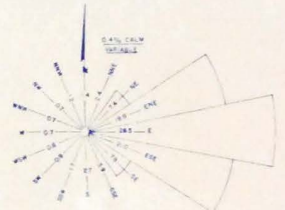
APPROVED 1/5/55
DATE
[Signature]
COMMANDING OFFICER

SUBMITTED 1/5/55
DATE
[Signature]
STATION DEVELOPMENT BOARD

SCALE AS SHOWN
SHEET OF
Y & D DWG NO. 597 723



KEY MAP OF SHEETS



MAG. VARIATION IS COMPUTED FROM DATA FURNISHED BY FLEET WEATHER CENTRAL AND COVERS THE PERIOD FROM JAN 1947 TO DEC 1951

INNER APRA HARBOR

OVERLAP, SEE Y & D DWG. 597 726

OVERLAP, SEE Y & D DWG. 597 724

LEGEND

- NAVY PROPERTY BOUNDARY LINE
- FUNCTIONAL AREA BOUNDARY
- SHORE LINE
- BULKHEAD LINE
- RIVER OR STREAM
- SWAMP
- CLIFF
- CLIFF LINE
- FENCE LINE
- BRIDGE
- ROADS
- EXISTING
- UNDER CONST OR PROPOSED
- FUTURE
- BUILDINGS OR STRUCTURES
- EXIST TEMP & ADV BASE
- FUTURE
- UNDER CONST OR PROPOSED
- EXIST PERM & SEMI-PERM
- ENTRANCE

MARKED PRINT

AREA ALLOCATION		AREA ALLOCATION	
AREA	ALLOCATION	AREA	ALLOCATION
1	ADMINISTRATIVE AREA	4	OPEN STORAGE
2	PUBLIC WORKS AREA	5	NAVAL EXCHANGE AREA
2A	UNITED SEAMEN'S SERVICE INC	6	NAVAL EXCHANGE CENTRAL LAUNDRY
3	NAVAL STATION INFIRMARY	7	COLD STORAGE & COMMUNAL AREA
3A	WAREHOUSE & TRANSIT SHED AREA	8	AVIATION SUPPLY AREA
3B	COMMERCIAL WHARF OF GUAM (UNYF OF GUAM)	9	BLACK OIL TANK FARM (FUEL DIVISION)
3C	NAVY CONTRACTOR SAWMILL & LUMBER YARD	10	DEPENDENT HOUSING AREA (LUSTEVCO)
		11	EXPANSION AREA

APPROVED FOR SHORE STATION DEVELOPMENT BOARD
 DATE
 APPROVED FOR BUREAU OF YARDS & DOCKS
 DATE
 APPROVED FOR SPONSOR BUREAU OF OFFICE
 DATE
 APPROVED FOR COMMAND DEVELOPMENT BOARD
 DATE

REVISIONS		DATE	BY
14398	DEPARTMENT OF THE NAVY BUREAU OF YARDS & DOCKS U.S. NAVAL BASE, MARIANAS NAVAL SUPPLY DEPOT GUAM		

MASTER SHORE STATION DEVELOPMENT PLAN
PART III - SECTION 2
GENERAL DEVELOPMENT PLAN

APPROVED 1/5/55
 SUBMITTED
 SCALE AS SHOWN
 SHEET 37
 STATION DEVELOPMENT BOARD
 597 723

