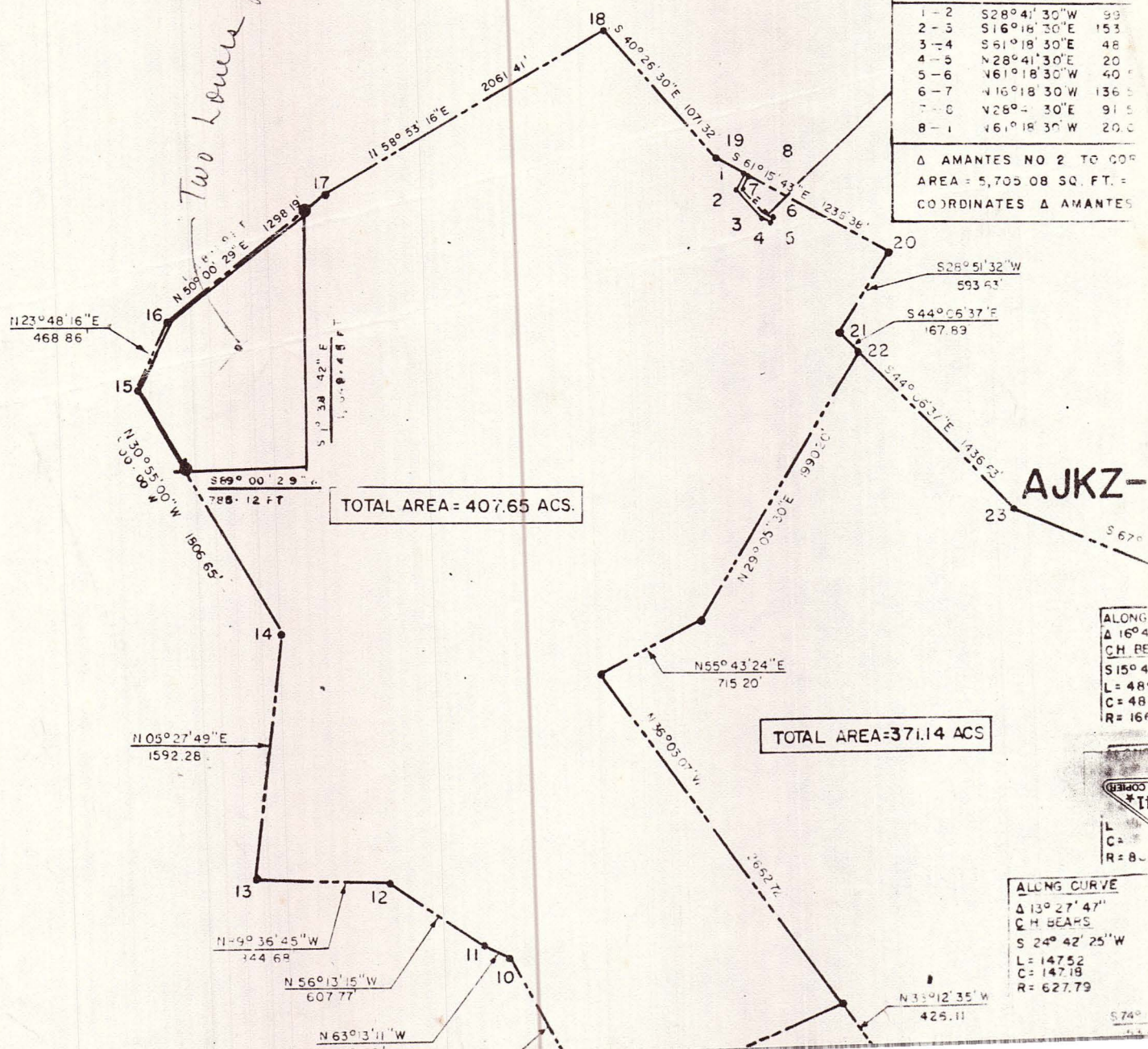


AJKE - ANDERSEN COMM. ANNEX NC

Two Louis part

WATER LINE R/W EAS		
COURSE	BEARING	DIST
1-2	S 28° 41' 30" W	99.0
2-3	S 16° 18' 30" E	153.0
3-4	S 61° 18' 30" E	48.0
4-5	N 28° 41' 30" E	20.0
5-6	N 61° 18' 30" W	40.0
6-7	N 16° 18' 30" W	136.5
7-8	N 28° 41' 30" E	91.5
8-1	N 61° 18' 30" W	20.0

Δ AMANTES NO 2 TO COR
 AREA = 5,705.08 SQ. FT. =
 COORDINATES Δ AMANTES



TOTAL AREA = 407.65 ACS.

TOTAL AREA = 371.14 ACS

AJKZ-

ALONG
 $\Delta = 16^\circ 4'$
 C.H. BEARS
 $L = 515.41'$
 $L = 489'$
 $C = 487'$
 $R = 1665'$

ALONG CURVE
 $\Delta = 13^\circ 27' 47"$
 C.H. BEARS
 $L = 24^\circ 42' 25"$
 $L = 147.52'$
 $C = 147.18'$
 $R = 627.79'$

L
 C
 R = 800



