

RESTRICTED "SECURITY INFORMATION"

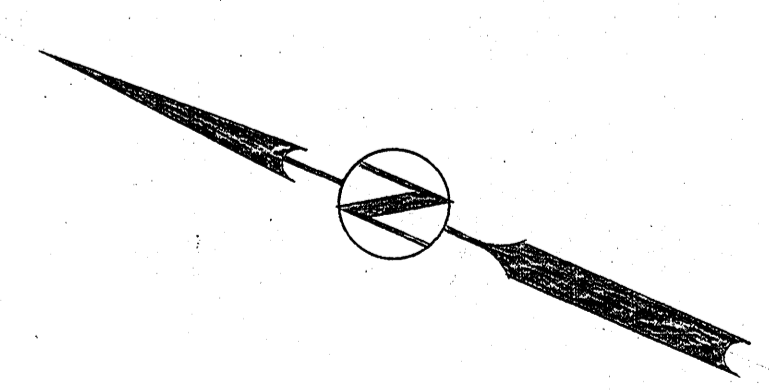
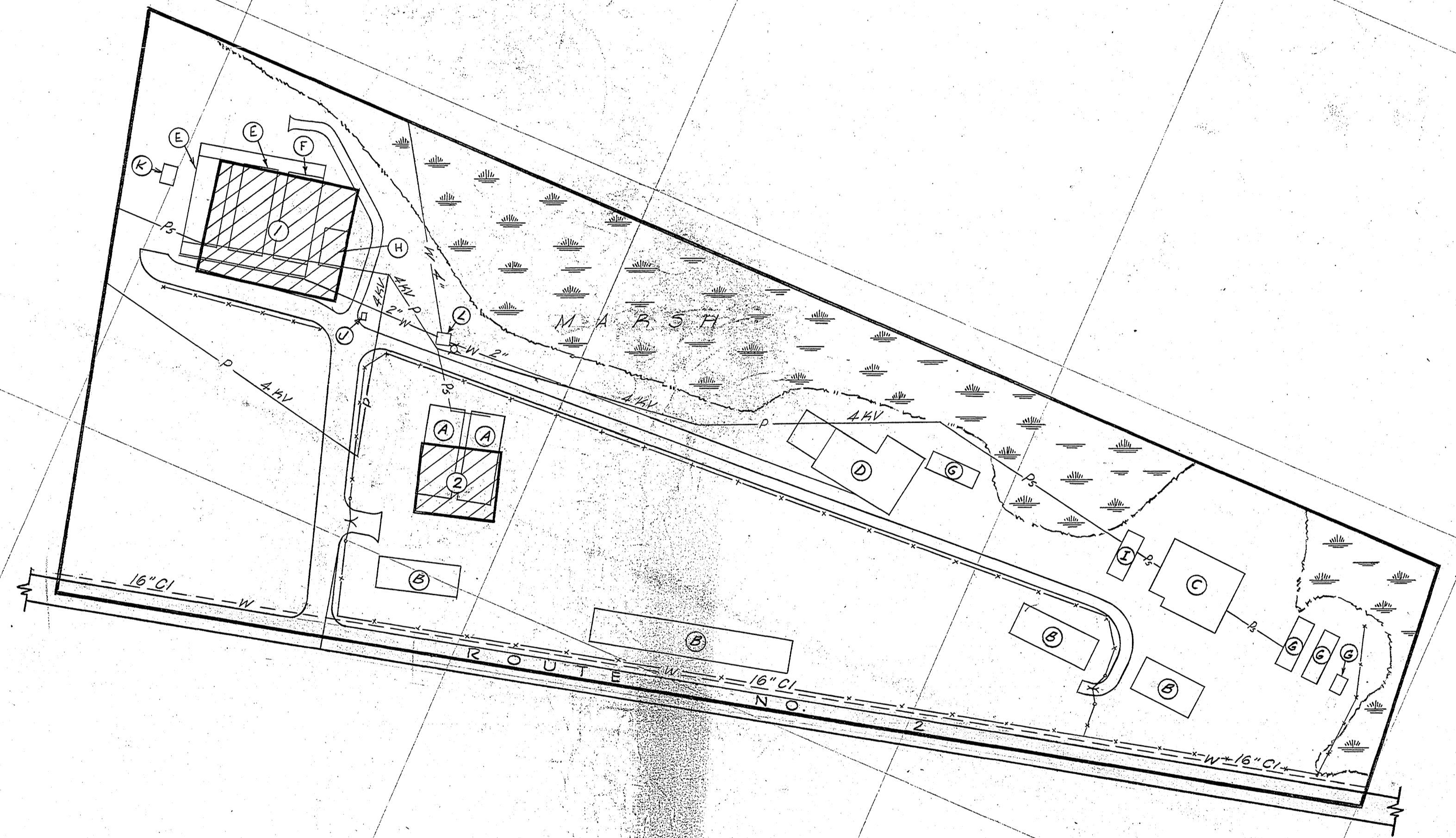
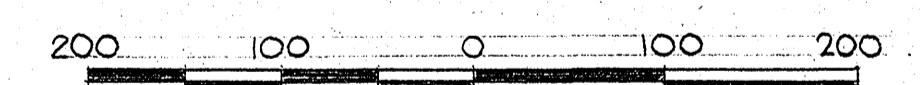
BUILDING SCHEDULE				
SYM	FUNCTION	NO OF UNITS	TYPE OF CONSTR	AREA IN SQ. FT.
1	OXYGEN & CO. GENERATING BLDG	1	REIN. CONC.	6160
2	ACETYLENE GENERATING BLDG	1	REIN. CONC.	3200
A	OXYGEN TANK STORAGE	2	QUONSET	8000
B	ACETYLENE TANK STORAGE	4	FRAME	17500
C	ACETYLENE PLANT	1	BUTLER	4000
D	OXYGEN PLANT	1	BUTLER	4000
E	OXYGEN PLANT	2	MOD QUON	8000
F	GAS PLANT OFFICE	1	"	4000
G	STORAGE	4	QUONSET	4600
H	STORAGE	1	FRAME	800
I	HEAD	1	MOD QUON	1120
J	GUARD SHACK	1	"	40
K	WATER TOWER	1	"	
L	SUBSTATION	1	"	

LEGEND

EXISTING BUILDING, INTERIM	
EXISTING BUILDING, PERMANENT	
FUTURE BUILDING, PERMANENT	
EXISTING ROAD, PAVED	
EXISTING ROAD, CORAL SURFACED	
FUTURE ROAD	
EXISTING WATER LINE	
FUTURE WATER LINE	
FIRE HYDRANT	
EXISTING SEWER LINE	
FUTURE SEWER LINE	
EXISTING POWER LINE, PRIMARY	
EXISTING POWER LINE, SECONDARY	
FUTURE POWER LINE, PRIMARY	
FUTURE POWER LINE, SECONDARY	
EXISTING COMMUNICATION LINE	
FUTURE COMMUNICATION LINE	
UNDERGROUND COMMUNICATION OR POWER LINE	
EXISTING WALK, PAVED	
EXISTING WALK, CORAL SURFACED	
FUTURE WALK	
BOUNDARY OF FUNCTIONAL AREA	

NOTE
 COORDINATE GRID IS BASED ON A POLYGONIC PROJECTION;
 LATITUDE 13°28'20.870" N ASSIGNED 164041.67 FEET NORTH,
 LONGITUDE 144°44'55.520" E ASSIGNED 164041.67 FEET EAST,
 ESTABLISHED BY PIE 1949.
 ELEVATIONS BASED ON MLLW DATUM.

GRAPHIC SCALE IN FEET



RESTRICTED "SECURITY INFORMATION"

APPROVED FOR SHORE STATION DEV BOARD
 APPROVED FOR BUREAU OF YARDS & DOCKS
 APPROVED FOR SPONSOR BUREAU OR OFFICE
 APPROVED FOR LOCAL DEV BOARD

SYMBOL	DESCRIPTION	DATE	APPD
MARIANAS AREA DWG NO. 10688 COM NAVAL FORCES, MARIANAS BASE DEVELOPMENT DIVISION MARIANAS AREA MASTER SHORE STATION DEVELOPMENT PLAN PART IV-SECTIONS 2, 4 & 6 FUNCTIONAL AREA 10 ACETYLENE, OXYGEN & CARBON PLANT AREA NAVAL OPERATING BASE, MARIANAS			
DESIGN	PST		
DRAWN	PST		
TRACED	PST		
CHECKED	WHL		
BR MGR	S.A.M.		
PR MGR	S.A.M.		
DES DIR	G. HARRIS		
PL & DES OFFICER	J.E. Meyer		
ISSUED			