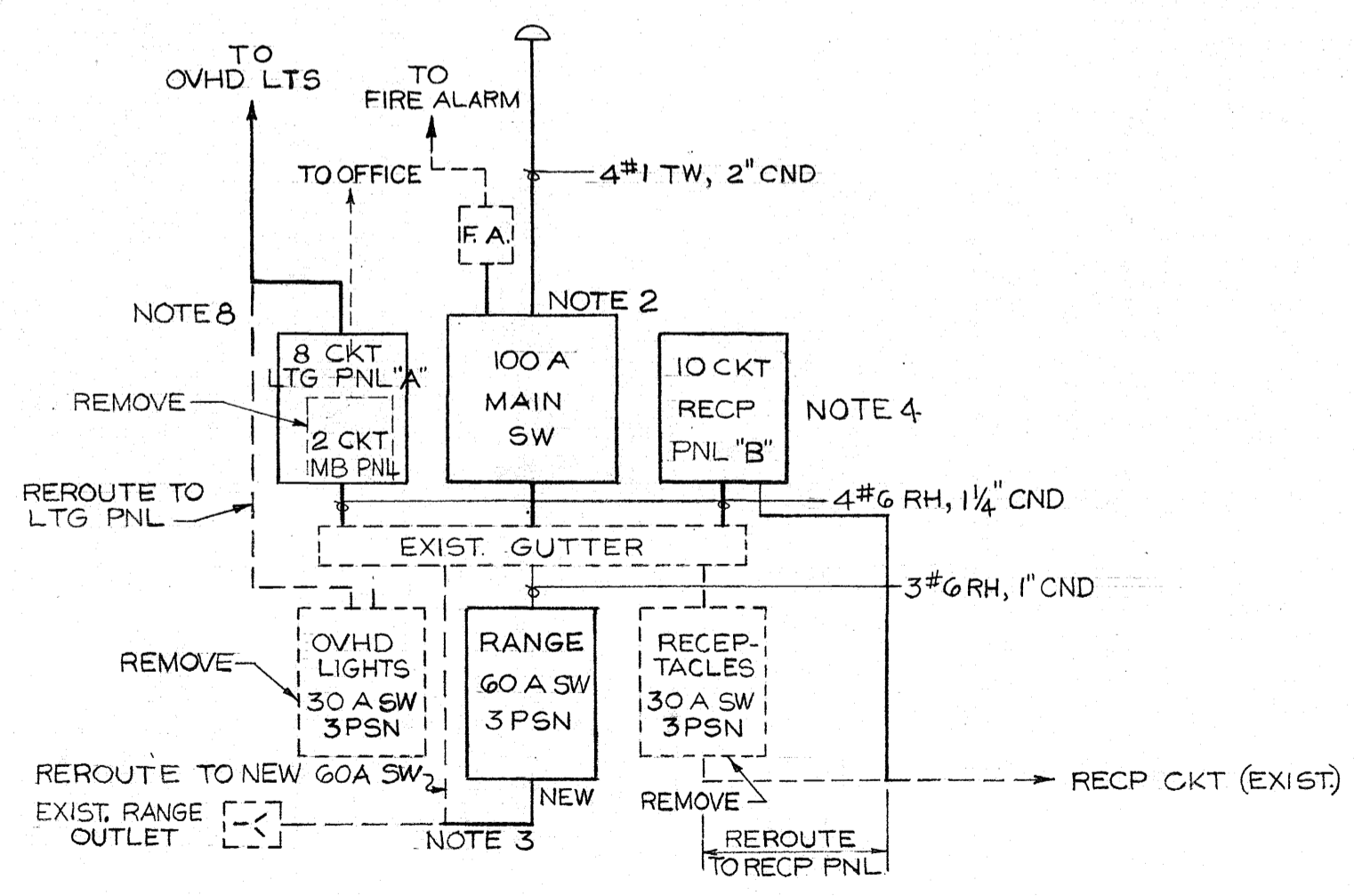


PLAN
SCALE: 1/8" = 1'-0"

NOTES

1. All work shall be done in accordance with the National Electrical Code.
2. Replace 60A, 3P Switch with 100A, 250V, 4PSN. Replace service with 4 #1 TW in 2" conduit.
3. Install 60A, 250V, 3PSN Switch for range outlet.
4. Install 1-10 circuit, 3Ø, 4W distribution panel or equivalent for receptacles - 20A circuit breakers.
5. Remove receptacle circuit beyond 7th outlet. First 7 exist. outlets to be split into 2 circuits. Replace duplex outlets with 3 wire polarized type.
6. Install 6 duplex outlets - 3 wire polarized type. Divide into 3 circuits of 2 outlets each.
7. All wiring shall be #12 T.W. in 1/2" E.M.T. except as shown.
8. Install 1 - 8 circuit, 3Ø 4W Itg. Panel or equivalent - 20A breakers.
9. Remove overhead lighting installation, including open feeder.
10. Install 3 rows of 200W R.L.M. Dome lighting fixtures - 12' from floor. Use swivel aligner hangers.



SCHEMATIC

PANEL SCHEDULE

- LTG. PNL.
- A1 Office
 - A3 Office (Receptacle)
 - A5 East Side Front
 - A7 " " Rear
 - A2 Center Front
 - A4 " " Rear
 - A6 West Side Rear
 - A8 Spare
- RECP. PNL.
- B1 East Wall Rear
 - B3 " " "
 - B5 " " "
 - B2 West " "
 - B4 " " "
 - B6 " " "
 - B7 East " Front
 - B9 " " "
 - B8 Spare
 - B10 Spare

SYMBOL	DESCRIPTION	DATE	APPROVAL
REVISIONS			
PWC DRAWING NO 10274	DEPT. OF THE NAVY BUREAU OF YARDS & DOCKS PUBLIC WORKS CENTER, GUAM, M.I.		
DES <i>G.H. Joy</i>	PWC COVERED STORAGE AREA BUILDING B-1 (APPLIANCE ISSUE) REWIRING ELECTRICAL		
DRWN <i>awz</i>			
CHK			
DIV DIR <i>Sillard</i>			
DEPT HEAD <i>Cooper</i>			
WR NO 7258	APPROVED <i>W. Stamp</i> FOR COMMANDING OFFICER	DATE 3-5-58	
SATISFACTORY TO ACTIVITY	SCALE	SPEC	
SIGNATURE	SHEET	OF	
DATE	TITLE	Y&D DRWG NO	