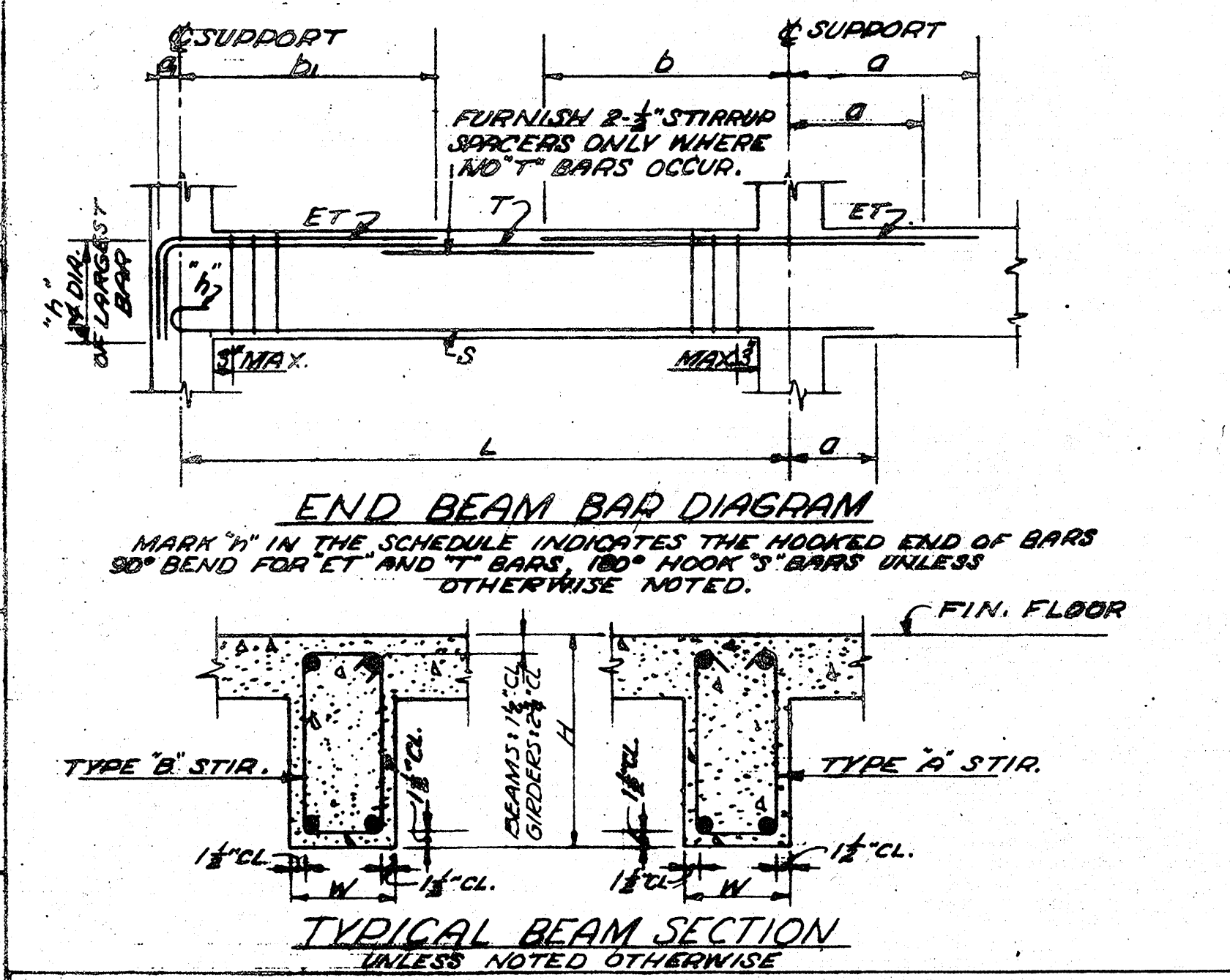
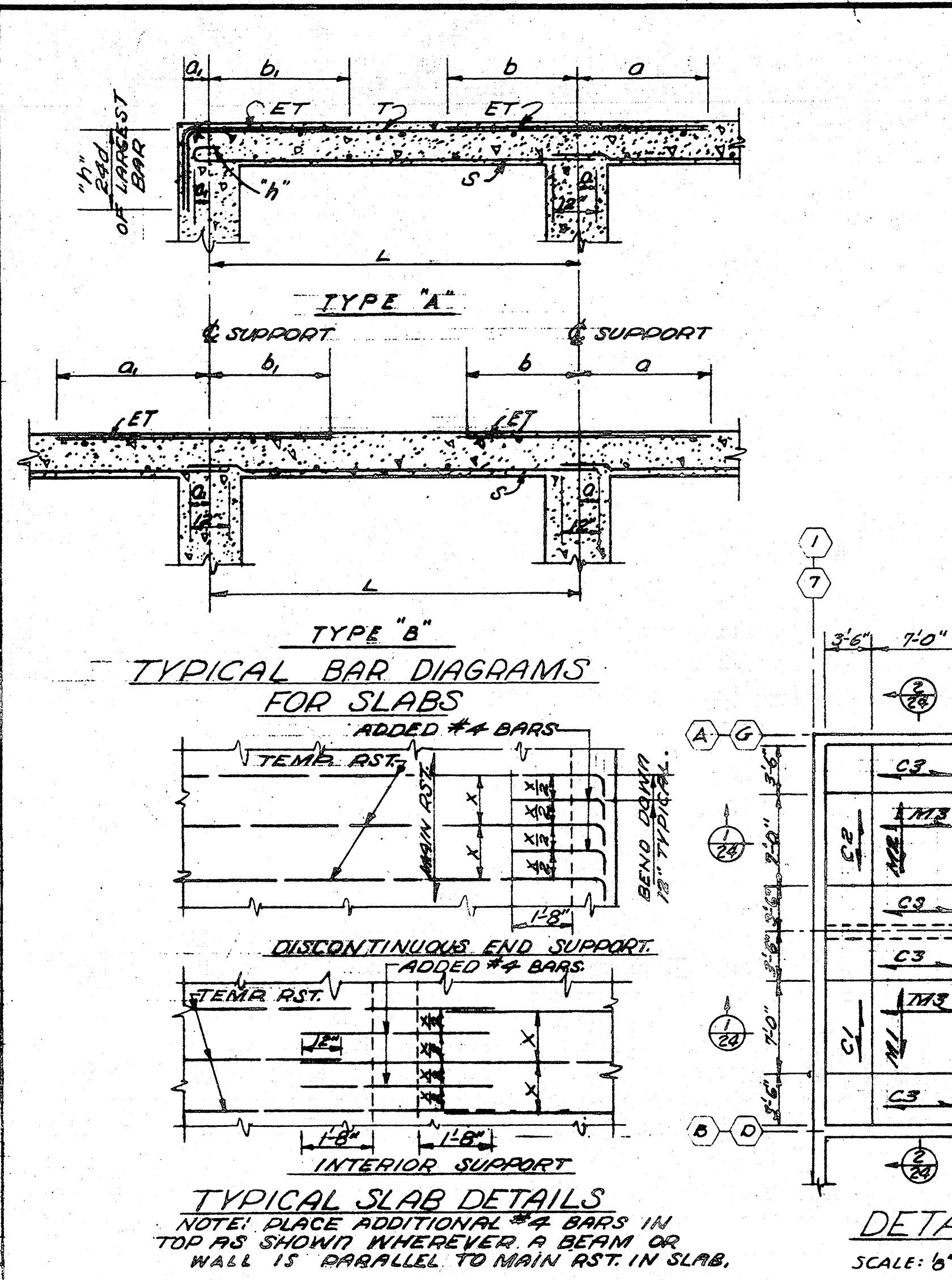
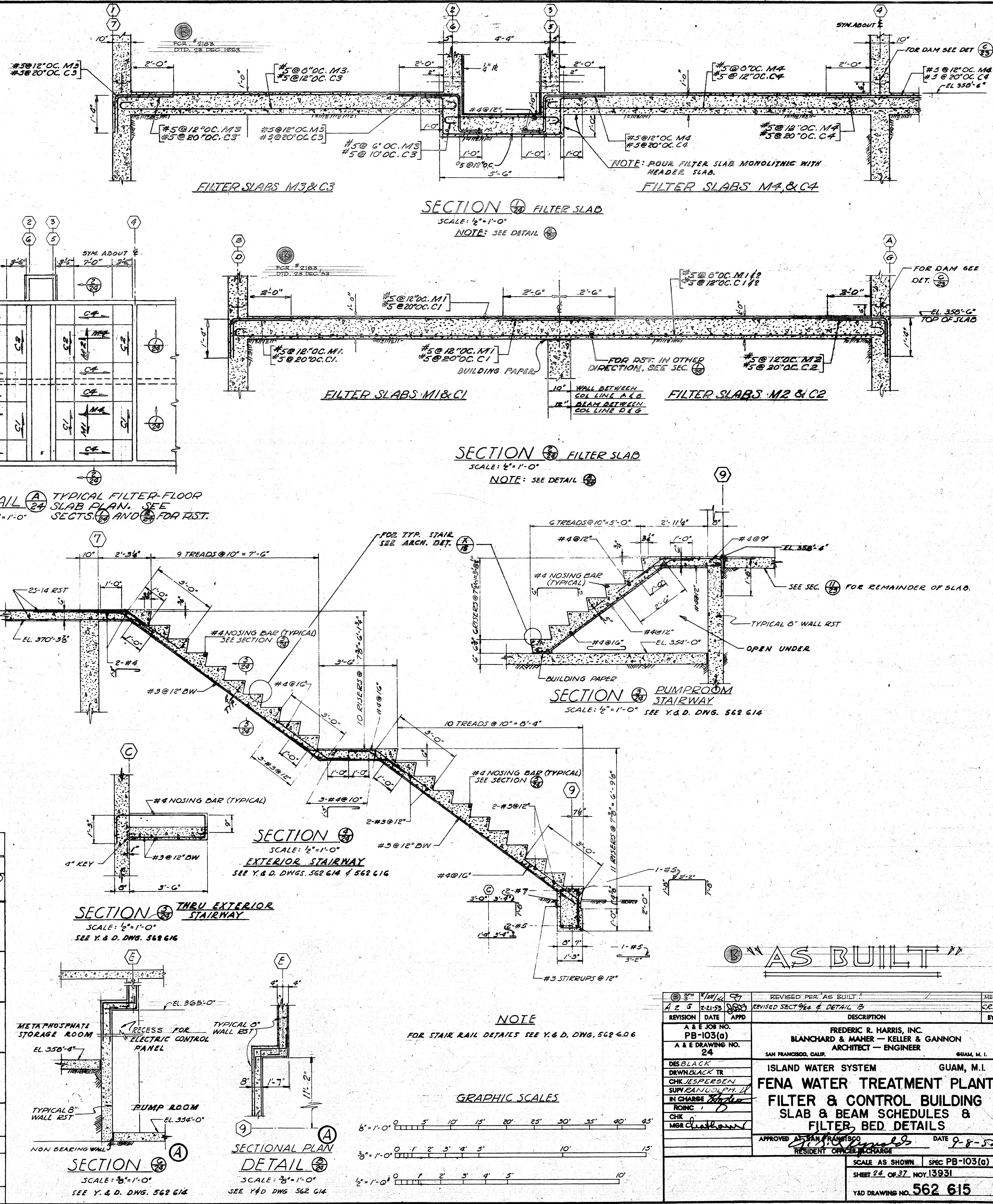


SLAB SCHEDULE									
SLAB MARK	THICKNESS	L	REINFORCING BARS				TYPE	REMARKS	
			BAR MARK	SIZE	LEFT	RIGHT			
25-1	G'	13'-11"	ET #4	#4	10'	13'	4'-0"	A	
			ET #4	#4	10'	13'	2'-0"		
			ET #4	#4	10'	13'	4'-0"		
			ET #4	#4	10'	13'	2'-0"		
			S #4	#4	12'	13'	G'		
25-2	G'	14'-4"	ET #4	#4	10'		4'-0"	B	
			ET #4	#4	10'		2'-0"		
			ET #4	#4	10'		2'-0"		
			S #4	#4	12'		G'		
			S #4	#4	12'		G'		
25-3	G'	11'-0"	ET #4	#4	10'		3'-0"	A	
			ET #4	#4	10'		2'-4"		
			ET #4	#4	10'		3'-0"		
			S #4	#4	12'		G'		
			S #4	#4	12'		G'		
25-4	G'	13'-11"	ET #4	#4	10'	4'-0"	4'-0"	B	
			ET #4	#4	10'	2'-0"	2'-0"		
			ET #4	#4	10'	2'-0"	7'-0"		
			S #4	#4	12'	G'	4'-6"		
			S #4	#4	12'	G'	4'-6"		
25-5	G'	16'-10"	ET #4	#4	10'		4'-6"	A	
			ET #4	#4	10'		3'-0"		
			S #4	#4	12'		9'		
			S #4	#4	12'		9'		
			S #4	#4	12'		9'		
25-6	G'	17'-10"	ET #5	#5	14'	13'	13'	A	
			ET #5	#5	14'	13'	3'-6"		
			ET #5	#5	14'	13'	3'-6"		
			S #5	#5	8'	13'	13'		
			S #5	#5	8'	13'	13'		
25-8	G'	3'-3"	ET #4	#4	9'			A	
			S #4	#4	12'				
			S #4	#4	12'				
			S #4	#4	12'				
			S #4	#4	12'				
25-9	G'	16'-10"	ET #4	#4	24'	12'	4'-6"	A	
			ET #4	#4	24'	12'	3'-0"		
			ET #4	#4	24'	12'	4'-6"		
			ET #4	#4	24'	12'	3'-0"		
			S #4	#4	12'	12'	12'		
25-10	G'	16'-10"	ET #4	#4	10'	12'	4'-6"	A	
			ET #4	#4	10'	12'	3'-0"		
			ET #4	#4	10'	12'	4'-6"		
			ET #4	#4	10'	12'	3'-0"		
			S #4	#4	12'	12'	12'		
25-11	G'	17'-0"	ET #4	#4	18'	12'	8'-6"	A	
			ET #4	#4	18'	12'	3'-0"		
			ET #4	#4	24'	12'	4'-6"		
			ET #4	#4	24'	12'	3'-0"		
			S #4	#4	12'	12'	6'		
25-12	G'	10'-0"	ET #4	#4	24'	5'-0"	4'-6"	D	
			ET #4	#4	24'	2'-0"	3'-0"		
			S #4	#4	10'	G'	G'		
			S #4	#4	12'	12'	6'		
			S #4	#4	12'	12'	6'		
25-13	G'	16'-10"	ET #4	#4	18'		4'-6"	A	
			ET #4	#4	18'		3'-0"		
			S #4	#4	12'		12'		
			S #4	#4	12'		12'		
			S #4	#4	12'		12'		
25-14	G'	13'-11"	ET #4	#4	10'	4'-0"	4'-0"	B	
			ET #4	#4	10'	2'-0"	2'-0"		
			ET #4	#4	10'				
			S #4	#4	12'		G'		
			S #4	#4	12'		G'		



BEAM SCHEDULE											
BEAM MARK	W	H	L	REINFORCING BARS				STIRRUPS		REMARKS	
				BAR MARK	NO.	SIZE	LEFT	RIGHT	SIZE		TYPE
26-1	20'	20"	17'-10"	ET	4	#7	13'	5'-0"	#3	B	10.5' REST @ 10'
				S	3	#10	13'	13'			3'-0"
				ET	2	#7	3'-0"	3'-0"	#3	A	10.5' REST @ 10'
26-2	10'	10"	17'-10"	ET	3	#7	13'	5'-0"	#3	A	10.5' REST @ 10'
				ET	3	#7	13'	5'-0"	#3	A	10.5' REST @ 10'
				S	2	#8	13'	13'			
26-3	10'	20"	17'-10"	ET	2	#7	3'-0"	3'-0"	#3	A	10.5' REST @ 10'
				S	2	#6	2'-6"	2'-6"			
				ET	2	#7	12'	12'	#3	A	10.5' REST @ 10'
26-4	10'	20"	16'-10"	ET	2	#7	12'	12'	#3	A	10.5' REST @ 10'
				S	2	#7	12'	12'			
				S	2	#7	12'	12'			



**NOTES:**

THE LEFT END OF THE SCHEDULED SLAB IS EITHER TO THE NORTH OR WEST EDGE OF THE BUILDING.

OUTER LAYERS OF RST RUN EAST-WEST IN ALL TWO-WAY SLABS.

SUFFIX "I" IN SLAB NUMBER THUS: (25-2I) INDICATES OPPOSITE HAND.

FOR PIPE HANGER DETAILS, SEE Y & D DWGS. 562 621

REVISED PER "AS BUILT"	DATE	BY
REVISION	DATE	APPD
A & E JOB NO. PB-103(0)		FREDERIC R. HARRIS, INC.
A & E DRAWING NO. 24		BLANCHARD & MAHER - KELLER & GANNON
		ARCHITECT - ENGINEER
		SAN FRANCISCO, CALIF.
		GUAM, M.I.
DES. BLACK		ISLAND WATER SYSTEM
CHK. J. SPERSEN		GUAM, M.I.
SUPV. J. SPERSEN		FENA WATER TREATMENT PLANT
IN CHARGE. J. SPERSEN		FILTER & CONTROL BUILDING
CHK. M. C. L. HARRIS		SLAB & BEAM SCHEDULES & FILTER, BED DETAILS
APPROVED AS BUILT		DATE 9-8-52
RESIDENT OFFICER IN CHARGE		
SCALE AS SHOWN		SPEC PB-103(0)
SHEET 24 OF 37		NOV. 1951
Y&D DRAWING NO. 562 615		