

REVISIONS			
SYM	DESCRIPTION	DATE	APPROVED

TECHNACELL-ELPOWER-SOLID-GEL RECHARGEABLE BATTERIES

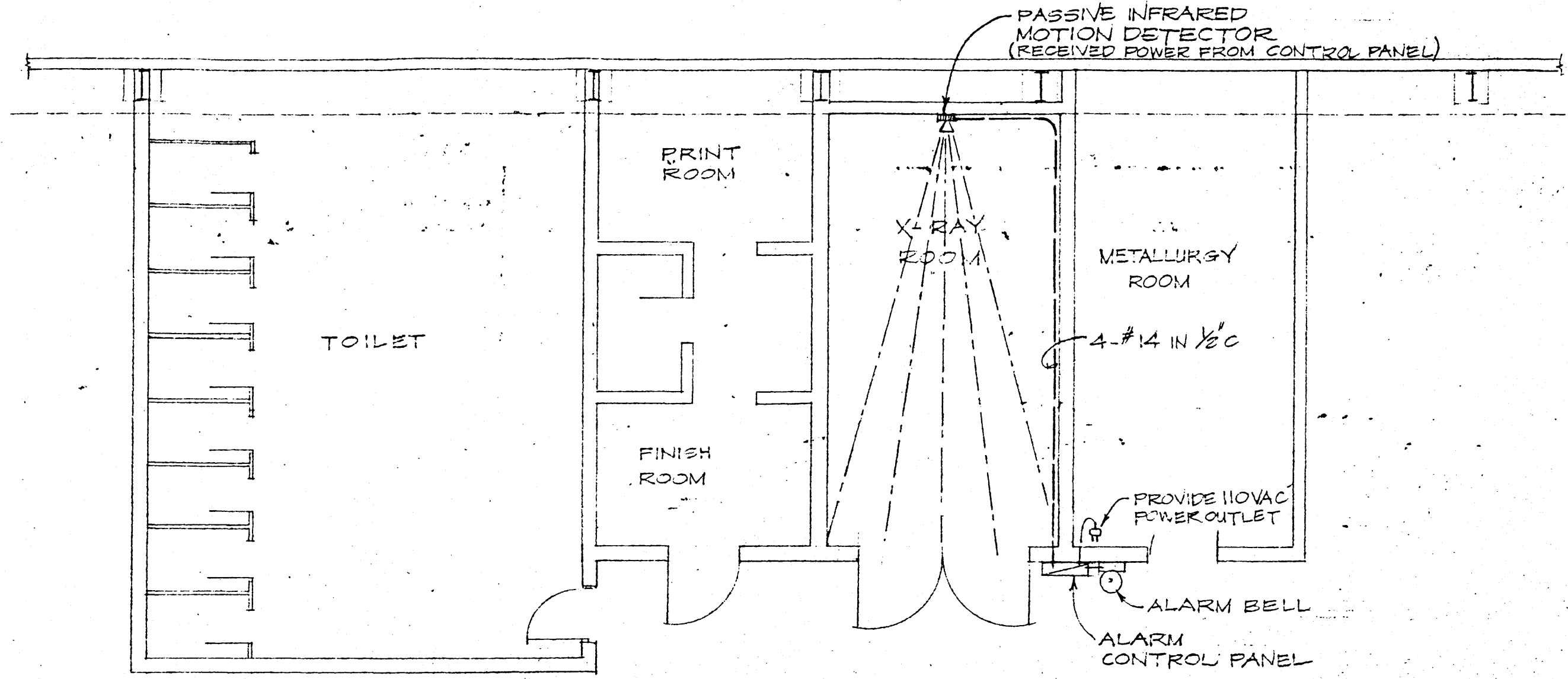
Bell-and-Box

Elpower batteries feature a high impact polystyrene case, a patented one way, self-sealing relief valve, and quick disconnect type terminals. They require no maintenance and will operate in any temperature range from arctic to sub-tropic. Elpower's coil design allows extraordinary recovery if the battery is totally discharged due to power failure or a switch being left on.

The batteries also feature 2 volts per cell open circuit voltage and they deliver their rated capacity regardless of previous usage.

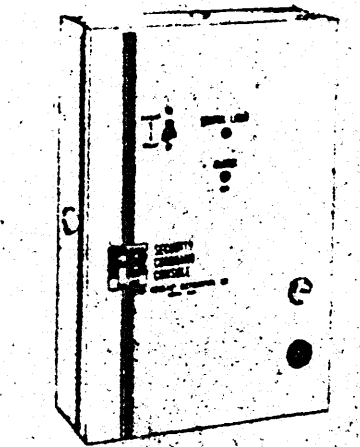
HOW TO ORDER

description	Arittech catalog number
Bell-and-Box, 10 inch, UL listed bell, with tamper, 6 VDC.	AB-200
Bell-and-Box, 6 VDC with mounted strobe light (clear lens) with two tamper switches, 10 inch UL listed bell, with tamper.	AB-210
Same as AB-200, except 12 VDC.	AB-212
Amesco ABB-1031 Bell-and-Box, 6 VDC motor driven, 10 inch UL listed bell, tamper and box, removable cover.	AB-230
Amesco Bell-and-Box. Same as AB-230 except 12 VDC.	AB-23
Bell-and-Box, 10 inch bell, grade A, 6 VDC, UL listed.	AB-605
description	Arittech catalog number
Powersource gel type rechargeable battery, 6 volts, 1 ampere hours.	BG-061
GC620-1AH, 6V, 1.8 AH battery.	BG-063
Model 1215 gel cell rechargeable battery, 12 volts, 1.5 ampere hours.	BG-121
Model 1245 gel cell rechargeable battery, 12 volts, 4.5 ampere hours.	BG-125



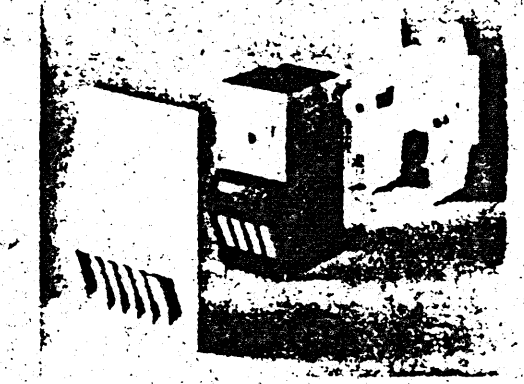
X-RAY ROOM, NDT SECTION - BLDG. 21
SCALE: 3/16" = 1'-0"

Model 1270 Burglar Alarm Control with supervised fire option.



- The FBI model 1270 is a burglary control instrument with a fire option and the following standard features:
- Remote arm or disarm multi-stations.
 - LED for circuit condition.
 - LED system set.
 - Uses standard LED type remotes.
 - Spare contacts.
 - Locked cabinet.
 - Plug-in components.
 - Entrance and exit delay.
 - Bell cut-off recycle timer.
 - Back-up system.
 - 2 zones.
 - Panic circuit (24 hr.).
 - Day/night circuit.
 - AC-DC instant power transfer.
 - Instant and delay switch for entrance/exit delay.
 - Bell output.
 - Rechargeable of dry cell stand-by circuit.
 - 13.20" H, 8.95" W, 2.65" D

Passive Infrared Intrusion Detectors



YOU'LL LIKE WHAT IT LOOKS AT

"Little Red" detectors provide wall-to-wall, to-floor curtain protection, help prevent false alarms from stationary heat sources and background variations, and compensate for background temperature changes. Patented amorphous optics create a unique, continuous curtain that intruders can't jump over or crawl under. To minimize unwanted alarms, signals from dual sensing elements undergo balanced processing - signal from one must exceed the other's to initiate alarm. In addition, Delta-TM background temperature-compensating circuit ensures that the detector isn't fooled by temperature changes, as some IR detectors are.

SPECIFICATIONS

Power Input:
The DR-301, DR-311, DR-321 and DR-341 operate on a nominal 12 VDC power source that is capable of supplying standby battery power in case of power failure. Input voltage minimum is 10.5 VDC, maximum is 14 VDC. Maximum ripple is 2 volts peak to peak at 12 VDC. Current 20 mA.

*Can be converted to AC power by removing jumper and adding a DU-690 class II plug-in transformer (116 VAC) and a BN-301 lead rechargeable battery (6 VDC, 100 mA hr) that provides approximately 4 hours of standby power.

Environmental Limits:

DC operation	AC operation	storage
0° F to 122° F	32° F to 122° F	22° F to 149° F
-18° C to 50° C	0° C to 50° C	-30° C to 65° C
90% relative humidity	90% relative humidity	100% relative humidity

LED Indicator:
An LED is located behind the translucent window. It emits a steady light when the detector is in alarm during walktesting. It can be easily disconnected after the detector has been installed.

Wiring Connections:
The detector's terminal strip has 4 terminals numbered 1, 2, 3 and 4. Terminals 1 and 2 are connected to the DC power source (1 is negative, 2 is positive) or to the transformer. Terminals 3 and 4 provide the alarm signal output. The alarm contacts are SPST with 33 ohm in series, rated at 0.5 ampere 150 VDC or peak AC maximum.

Tamper:
Tamper protection is only available on the DR-301, DR-321 and DR-341 detectors, and only when they are surface mounted with a DR-334 decorative enclosure. When the cover of the enclosure is removed from the detector, an alarm is initiated.

Dimensions:

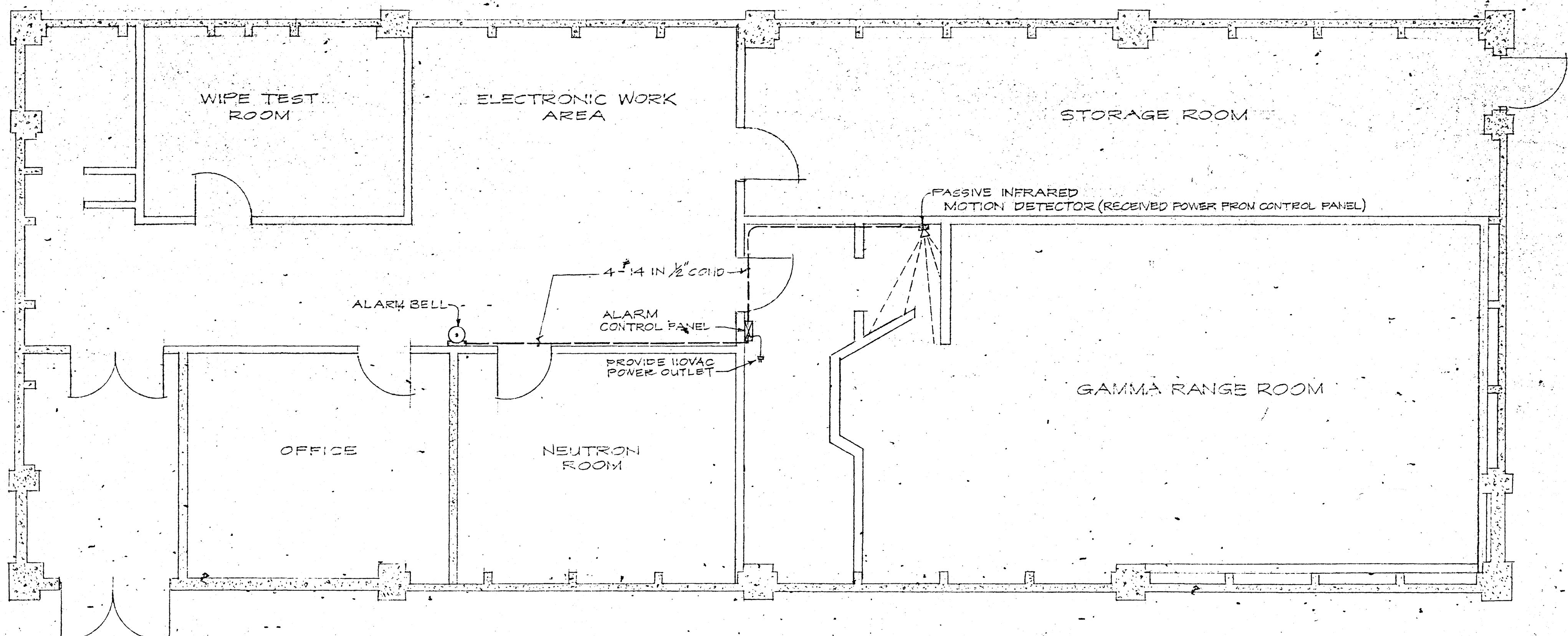
Basic Detector	4.5 inches high, 2.25 inches wide, 2.5 inches deep (117 x 57 x 26 mm)
Surface Enclosure	6.2 x 3.1 x 2.7 inches (158 x 76 x 69 mm)
Trim Plate	(6.25 x 2.44 x 0.26 inches) (153 x 67 x 7 mm)

Sensitivity:
Detects targets moving from 0.5 ft/sec to 7.5 ft/sec.
Detects temperature differentials as low as 2° C.

HOW TO ORDER

description	Arittech catalog number
Model 1270 burglary control with supervised fire option, 24 VAC transformer, requires 12V 4 Ah battery.	CC-370

CONTROL & DETECTOR EQUIPMENT



CALIBRATION LAB BLDG. 102 - FLOOR PLAN
SCALE: 1/4" = 1'-0"

SCOPE OF WORK

1. IT IS THE INTENT OF THIS PROJECT TO ENSURE THAT UNAUTHORIZED ENTRY INTO THE HAZARDOUS RADIATION AREA IS CRITICALLY MONITORED AND PREVENTED AT ALL TIME.
2. THE ACTIVITY WILL DEVELOP THE ACTION PROCEDURES FOR ALARM CONDITION AND WHEN MAKING AUTHORIZED ENTRANCE FOR OFFICIAL TASK.
3. REMOTING THE ALARM SIGNAL TO OTHER LOCATIONS ARE NOT REQUIRED.

GENERAL NOTES:

1. FOR P & E, ONE COMPLETE SET OF INSTALLATION AND MAINTENANCE MANUAL SHALL BE ORDERED FOR C-425 FILE. ENSURE THAT THIS PROVISION IS NOTED IN THE JOB PLAN, BY ASSIGNING THE RESPONSIBLE PWC CODE TO NOTIFY C-425 UPON RECEIPT.
2. THE PRODUCT SHOWN ABOVE IS PROVIDED SOLELY FOR THE PURPOSE OF SPECIFYING THE TECHNICAL FEATURES REQUIRED, ANY PRODUCT HAVING A SIMILAR FUNCTION AND SPECIFICATION IS ACCEPTABLE.

DES COM. 425

DRAWN *[Signature]* 7/86

CHK *[Signature]*

DIV DIR *[Signature]*

DEPT HEAD *[Signature]* 4/12/87

WR NO 50408

APPROVED *[Signature]* DATE 4/12/87

ACTIVITY CIVIL ENGINEER

APPROVED *[Signature]* DATE 4/12/87

ASSIS. T. PROD. OFFICER

SATISFACTORY TO: *[Signature]* DATE 4/12/87

CODE 20A, SAFETY ENGR.

DEPARTMENT OF THE NAVY NAVAL FACILITIES ENGINEERING COMMAND

PUBLIC WORKS CENTER

GUAM, M. I.

SHIP REPAIR FACILITY GUAM, M. I.

INTRUSION ALARM INSTALLATION FOR BLDGS. # 21 & 102

CODE IDENT NO 80091

SIZE D

PWC DRAWING NO 16921

SCALE SHOWN

SPEC

SHEET 1 OF 1