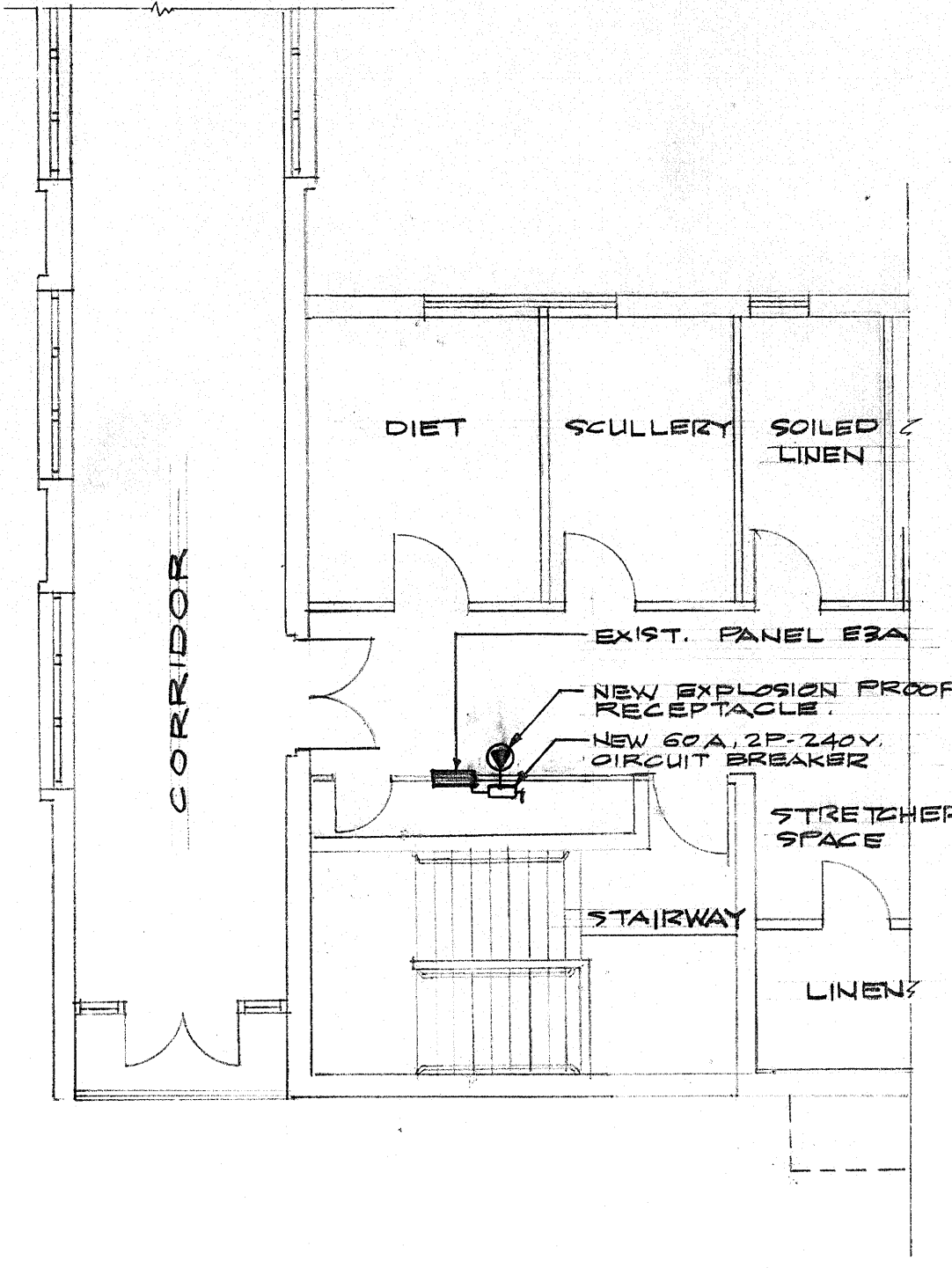
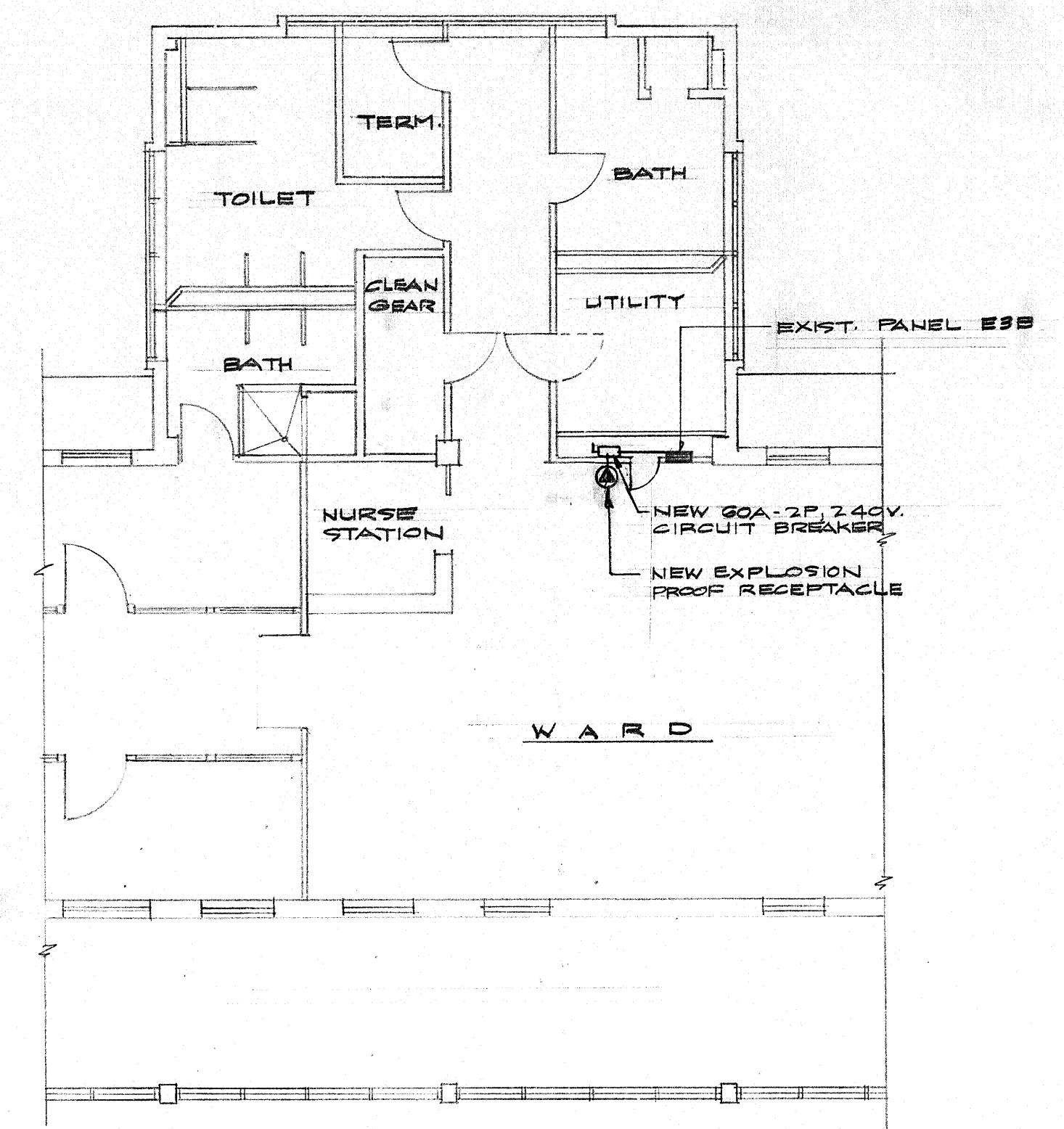


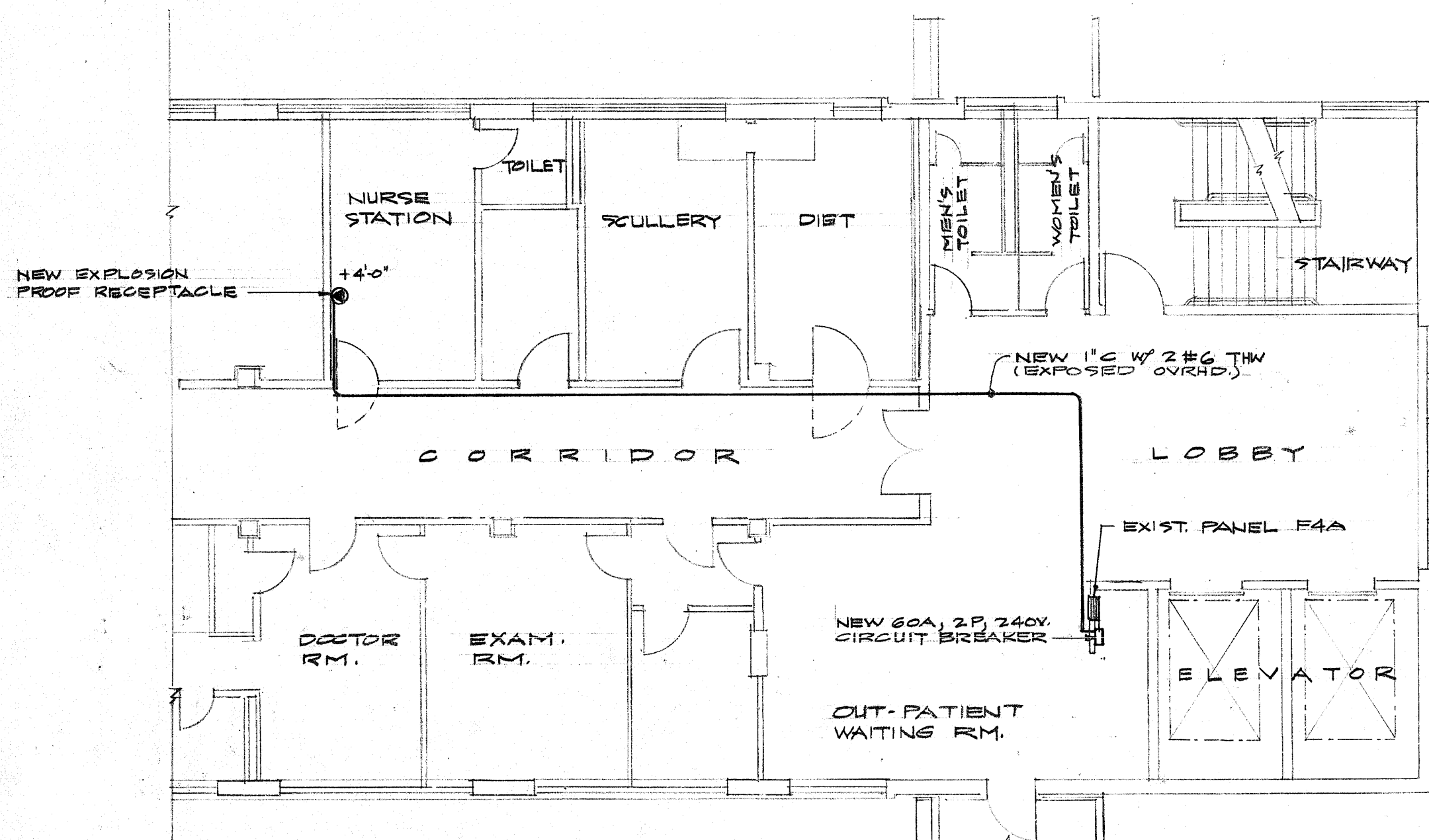
PARTIAL FLOOR PLAN (UNIT-A SECOND & THIRD FLR)
SCALE 1/8" = 1'-0"



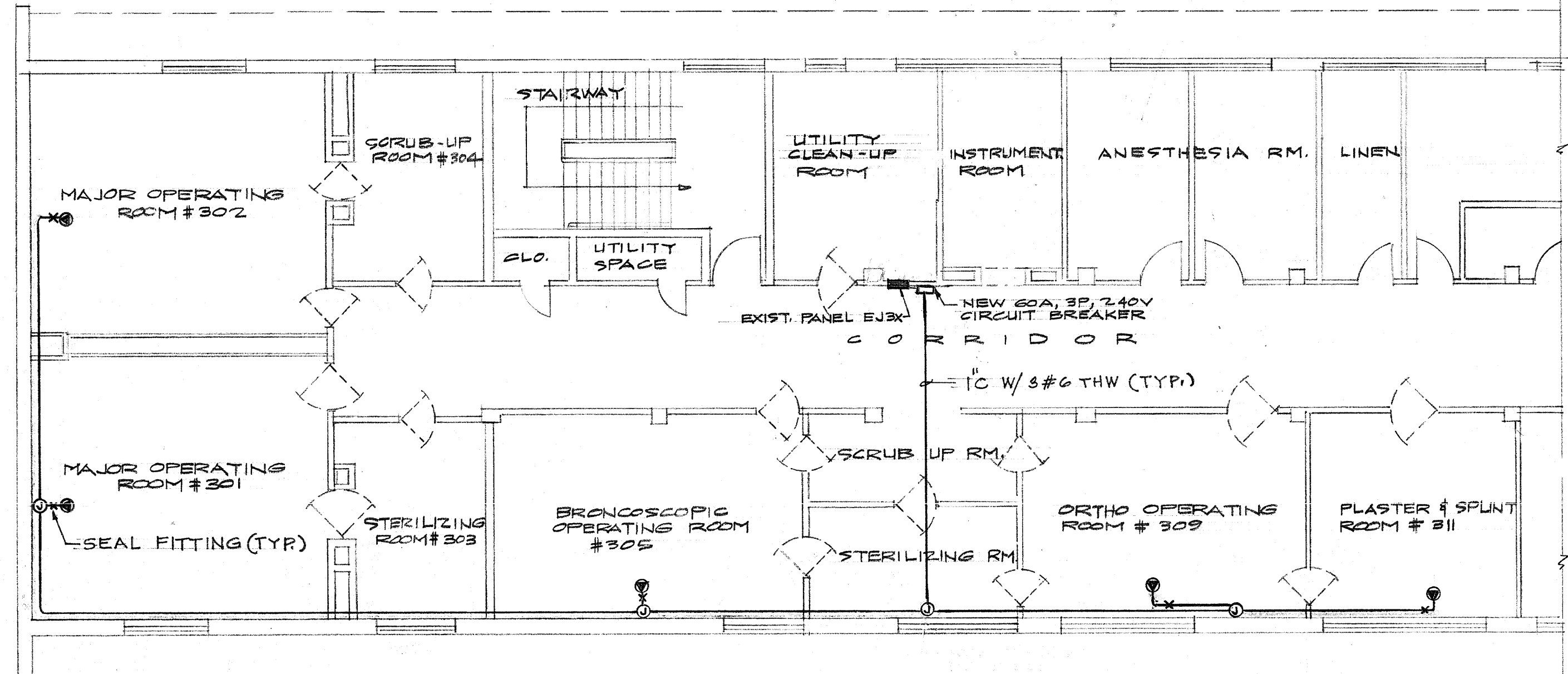
PARTIAL FLOOR PLAN (UNIT-E THIRD FLR)
SCALE 1/8" = 1'-0"



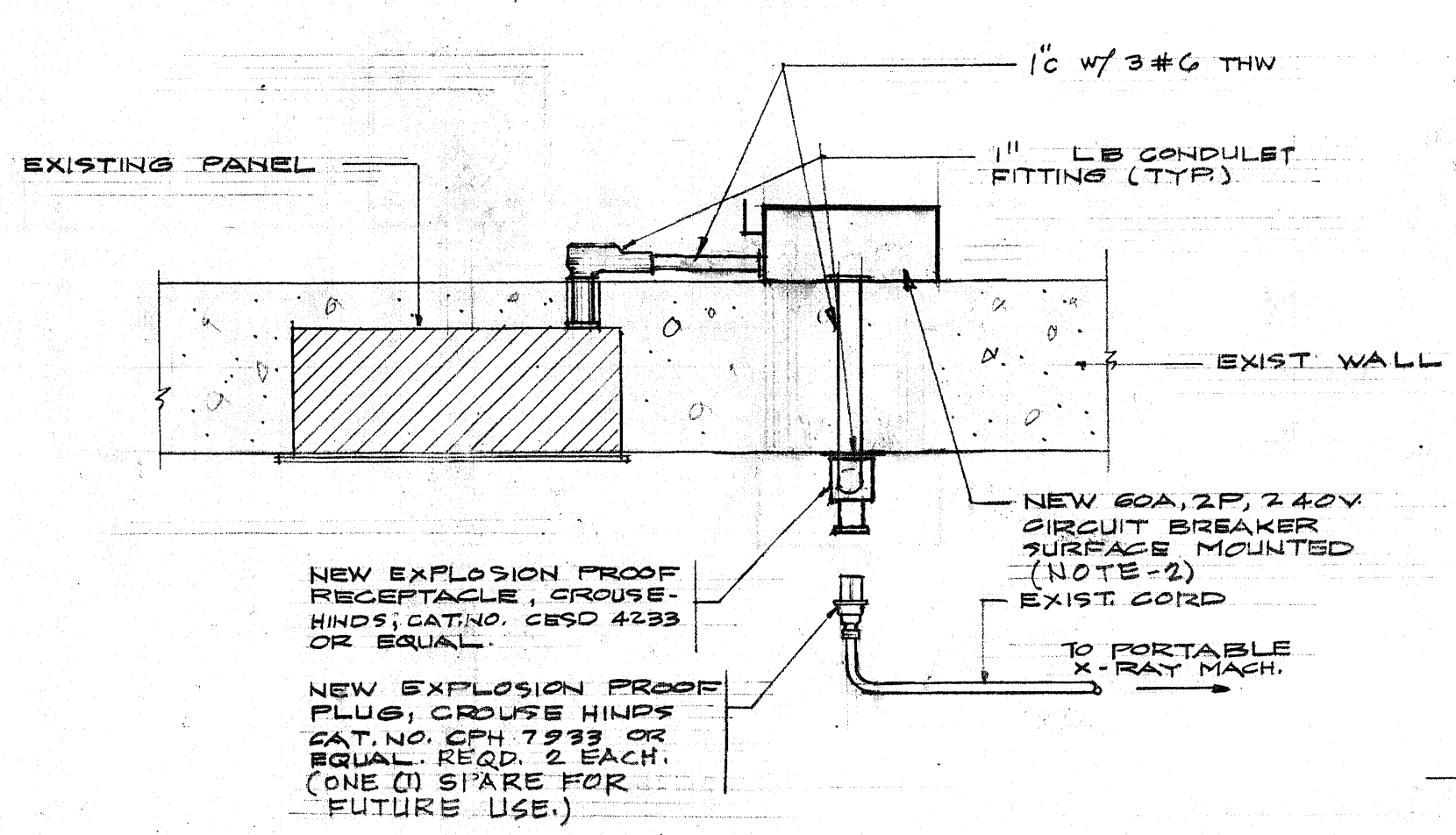
PARTIAL FLOOR PLAN (UNIT-E THIRD FLR)



PARTIAL FLOOR PLAN (UNIT-F FOURTH FLR.)
SCALE 1/8" = 1'-0"

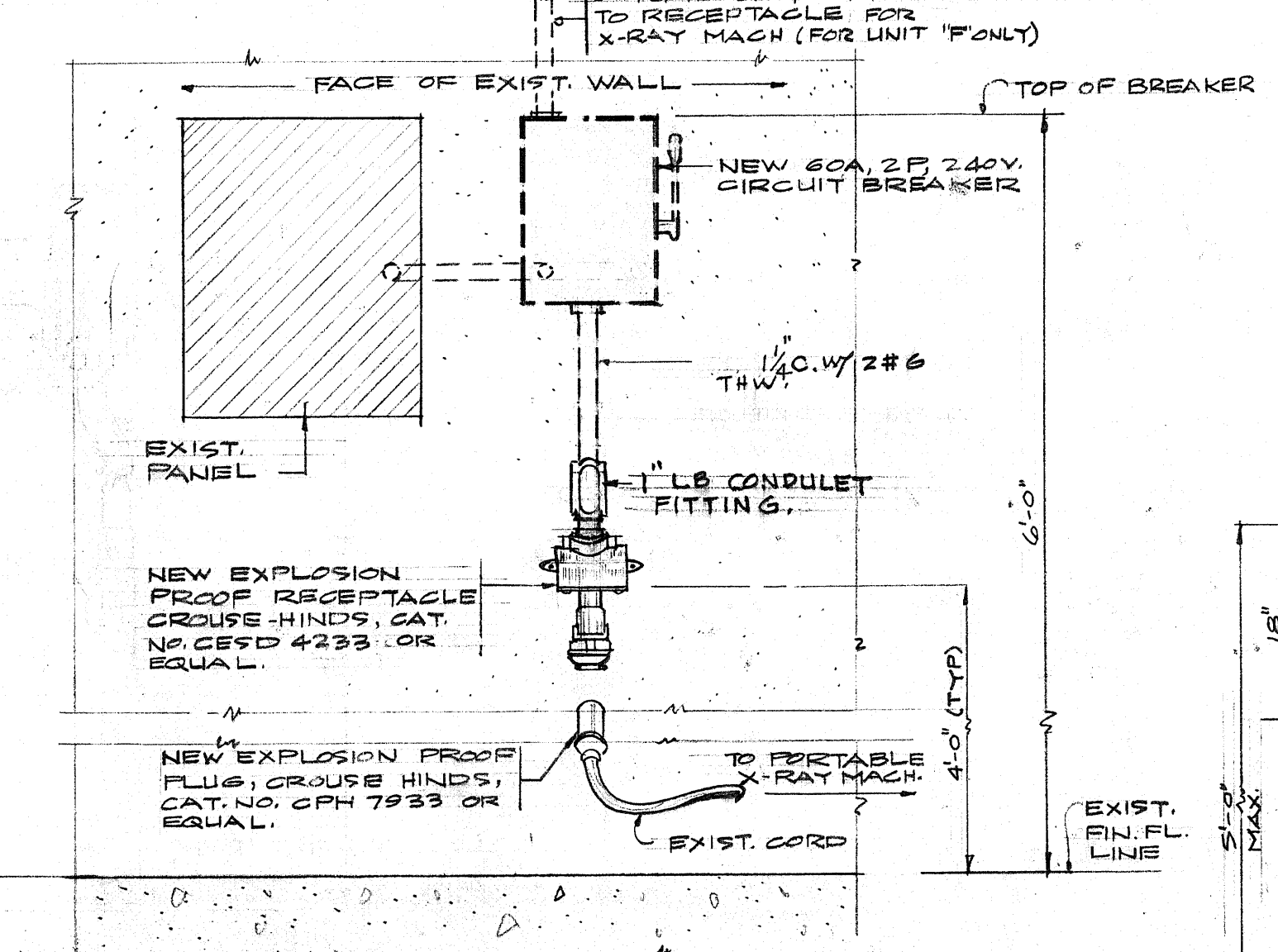


PARTIAL FLOOR PLAN (UNIT-J THIRD FLR)
SCALE 1/8" = 1'-0"



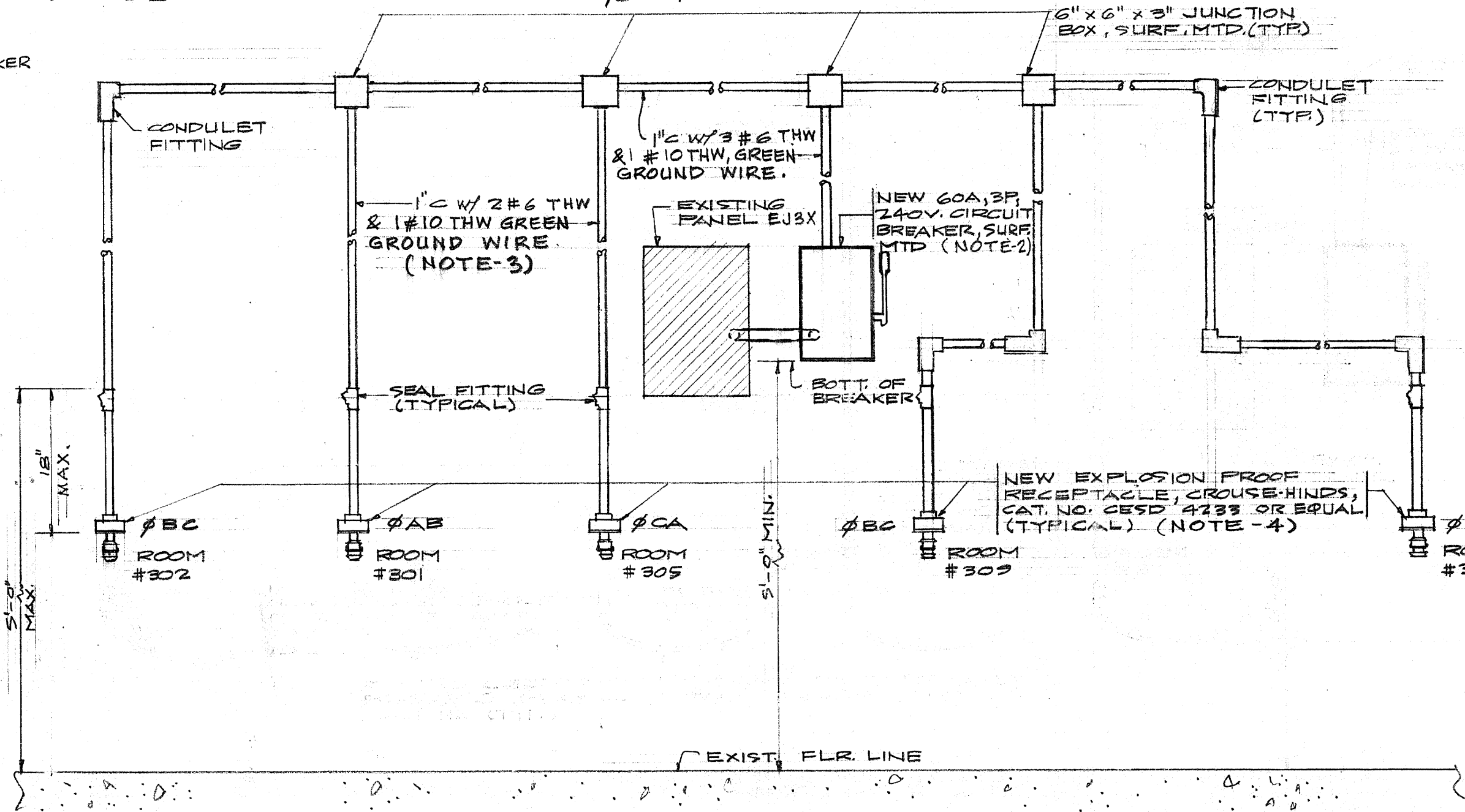
PLAN

RECEPTACLE MOUNTING DETAILS (TYP. FOR UNITS A, B, D, E, F)
SCALE



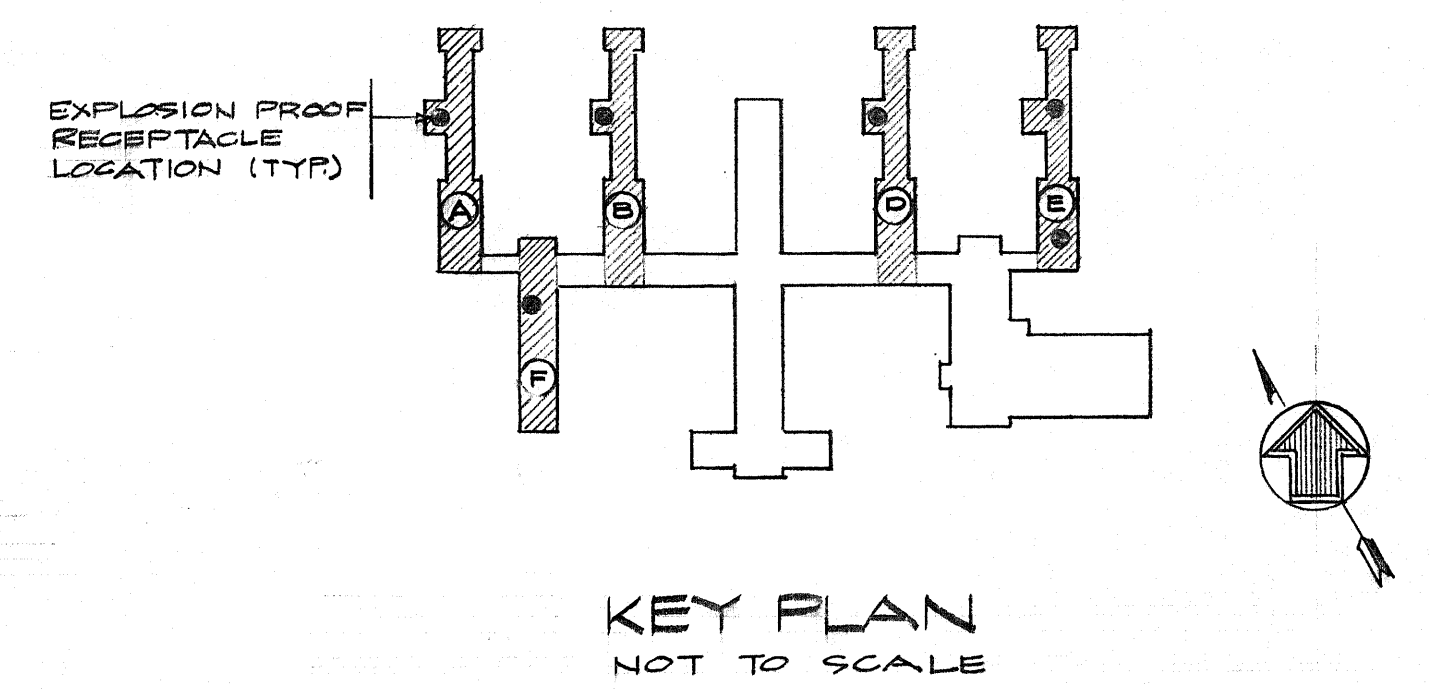
ELEVATION

RECEPTACLE MOUNTING DETAILS (TYP. FOR UNITS A, B, D, E, F)
SCALE



ELEVATION

RECEPTACLE MOUNTED DETAIL (UNIT-J THIRD FLR)



KEY PLAN
NOT TO SCALE

REVISIONS			
SYM	DESCRIPTION	DATE	APPROVED

NOTES:

1. ALL MATERIALS AND WORKMANSHIP SHALL CONFORM WITH NAVY SPECIFICATIONS 94 AND NATIONAL ELECTRICAL CODE.
2. CONNECT LINE SIDE OF 60A CIRCUIT BREAKER TO LINE SIDE OF EXISTING PANEL.
3. CONNECT #10 THW GREEN GROUND WIRE TO NEAREST COLD WATER PIPE.
4. ALL RECEPTABLES, BOXES AND PLUGS SHALL BE CAST ALUMINUM.
5. PAINT ALL NEW CONDUITS, FITTINGS AND PULL BOXES TO MATCH EXISTING ROOM COLOR.

DES ELECTRICAL	DEPARTMENT OF THE NAVY NAVAL FACILITIES ENGINEERING COMMAND		
DRAWN PANGELINAN	PUBLIC WORKS CENTER GUAM, M. I.		
CHK <i>Bur 3/4-09</i>	U.S. NAVAL HOSPITAL GUAM, M. I.		
DIV DIR <i>William Acty</i>	MAIN BUILDING UNITS A, B, D, E, F, & J		
DEPT HEAD <i>William Acty</i>	PORTABLE X-RAY RECEPTABLES		
ACE <i>W. Leary</i>	4/1/09		
WR NO 1934316	CODE IDENT NO 80091	SIZE F	PWC DRAWING NO 14,576
APPROVED <i>W. Leary</i>	DATE 4/1/09	SCALE 60% (250X)	SPEC NBY
COMMANDING OFFICER			SHEET 1 OF 1